

ALLOY STEEL



10+ years of the experience in
ferrous & non-ferrous metals

www.onetouchexim.com

EXPORTER OF
FERROUS & NON-FERROUS METALS

With an outstanding range of steel products, One Touch Exim Engage in manufacturing and supplying high-quality SS metal products with a robust mix of experience over the decades. Our product range includes various types of steel tubes, tubing & pipes, stainless steel shim, welded pipes, steel pipe fittings, and more.

We have a strict quality control approach to ensure that every product we manufacture and supply must meet industry standards and customer expectations.

We make a global presence with our quality products, commitment & on-time delivery. Our dedicated team of procurement and logistics works 24/7 to support the Marketing team. As a result of buying & selling non-ferrous metal for many years, OneTouchexim has established itself as an outstanding worldwide procurement network, trader & distributor. We manage a huge inventory of metals starting from Stainless Steel, Alloy Steel, Brass & Bronze from the raw material to the finished product.

We offer a platform where small customers can buy a wide range of products with MOQ & we consolidate for them. Our client looking at us as a one-stop solution for all categories of metals. OneTouchexim helps beyond the range on special occasions to find the best match of product. We aim to provide the right product at the right price & the right time.



Our Mission

To manufacture and supply high-quality steel products and services that meet the needs of the customers with minimal environmental impact. Building trust and long-term relationships for achieving goals effectively. We also believe that our success is tied to the success of our employees, stakeholders, & communities.



Our Vision

Expanding global presence through strategic partnerships and acquisitions to better serve customers and create sustainable growth. We believe that through dedication, hard work, and cooperation we will be able to create a bright future for everyone.

Accountability

We have our trusted supply chain to promise delivery on time. We accept our individual and team responsibilities to meet our commitments & take responsibility for our performance in all of our decisions and actions. We take care of accountability for our precious clients doesn't matter when they start working with us.

Cooperation

Good mutual cooperation across positions and departments is the basis for a pleasant working atmosphere in which employees feel good about themselves and what they are doing. The outmoded oppositions between production and maintenance, factory and administration, and production and sales no longer have any places.

Innovation

We are creative in delivering value to our fellow associates, customers, shareowners, manufacturers, and the community. We anticipate change and capitalize on the many opportunities that arise. Innovation is a continual process that requires ongoing monitoring, testing, and leadership to minimize risks and optimize outcomes.

Positive Change

Embracing and capitalizing on change, recognizing that every employee must be empowered to stimulate continuous improvement in all aspects of our business. Positive change encourages innovation, develops skills, develops staff and leads to better business opportunities, and improves staff morale.

Professionalism

We strive to fulfill our responsibilities to the highest possible standards throughout. Employers want new workers to be responsible, ethical, and team-oriented, and to possess strong communication, interpersonal, and problem-solving skills. Wrap these skills up all together and you've got professionalism.

10+ years of experience

Leadership

We encourage leadership among employees to develop and maintain a talent pool. Life, Health, and Environment. We seek to improve our well-being, our working conditions, and the surroundings in which we live. This is different from traditional leadership where the leader's main focus is the thriving of their company or organization.

Teamwork

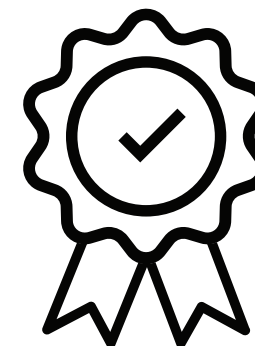
A modern company must be based on teamwork and mutual trust, on striving together for continuous improvement. Our team is supportive of each other's efforts, loyal to one another, and cares for each other both personally and professionally. We work together toward a collective goal in an efficient manner.

Empowerment

To empower our talented people to take the initiative and to do what's right. Customer service empowerment involves encouraging and authorizing customer service representatives to make decisions that can ultimately benefit both the customer and the company with the help of employee experience.

Open communication

All team members are encouraged to openly share their opinions and views. Open communication between senior managers & other workers helps to express their ideas, issues & thoughts with one another in a steady, honest, transparent, and reliable manner. This way, teams can avoid surprises, resolve conflicts, and collaborate better.



PRODUCT	STANDARDS & GRADES	SIZE RANGE
Alloy Steel Pipes	ASTM / ASME A 335 Gr.: P 1 , P 5 , P 9 , P 11 , P 12 , P 22 , P 23 , P 91	15 NB To 300 NB SCH: 40S To XXS
Nickel Alloy Pipes	AASTM / ASME SB 161/165/464/423/167/444/517/622/619/626 Gr.: UNS 2200 (NICKEL 200), UNS 2201 (NICKEL 201), UNS 4400 (MONEL 400), UNS 8020 (ALLOY 20 / 20 CB 3), UNS 8825 INCONEL (825), UNS 6600 (INCONEL 600), UNS 6601 (INCONEL 601), UNS 6625 (INCONEL 625), UNS 10276 (HASTELLOY C 276)	15 NB To 300 NB SCH: 40S To XXS
Copper Alloy	ASTM / ASME SB 111 Gr.: UNS NO. C 10100, 10200, 10300, 10800, 12000, 12200, 70600, 71500,71640 ASTM / ASME SB 466 Gr.: UNS NO. C 70600 (CU -NI- 90/10) , C 71500 (CU -NI- 70/30)	15 NB To 300 NB SCH: 40S To XXS
Alloy Tubes	ASTM / ASME A/SA 213 Gr.: T9, T11, T12, T22, T91	6.35 mm OD To 101.6 mm OD SWG: 20 ,18,16,12,10 & 3.6 mm Thk
Nickel Alloy Tubes	ASTM / ASME SB 163 / 165 / 167 / 464/ 517 / 619 / 622 / 626 / 704 / 705 Gr.: UNS 2200 (NICKEL 200), UNS 2201 (NICKEL 201), UNS 4400 (MONEL 400), UNS 8020 (ALLOY 20 / 20 CB 3), UNS 8825 INCONEL (825), UNS 6600 (INCONEL 600), UNS 6601 (INCONEL 601), UNS 6625 (INCONEL 625), UNS 10276 (HASTELLOY C 276)	6.35 mm OD To 101.6 mm OD SWG: 20 ,18,16,12,10 & 3.6 mm Thk
Cupro-Nickel Tubes	ASTM / ASME SB 111 Gr.: UNS NO. C 70600 (CU -NI- 90/10) / C 71500 (CU -NI- 70/30) / C 71640 (CU -NI-66/30/2/2)	6.35 mm OD To 101.6 mm OD SWG: 20 ,18,16,12,10 & 3.6 mm Thk

Forms

Round Bars, Square Bars, Hexagons, Rectangles, Triangles, I-Bars.SS

Length

Hot Dipped Galvanizing, Epoxy & FBE Coating, Electro Polish

Ends

Plain End, Beveled End, Threaded

Value Added Services

Hot Dipped Galvanizing, Electro Polish, Drawing & Expansion, Bending, Buffing

PRODUCT	STANDARDS & GRADES	SIZE RANGE
Alloy Steel Pipes	ASTM / ASME A/SA 387 Gr.: F 11, F 12, F 22, F 91	Thickness : 5mm To 50 mm Width : 1000 mm To 2500 mm Length : 2500 mm to 12500 mm
Boiler Plate	SA 516 Gr.: 70	
High Speed Steel	Gr.: M2, M3, M35, M42.	
HCHCR	Gr.: D2, D3	
Nickel Alloy Plates	ASTM / ASME SB 162 / 127 / 424 / 168 / 443 / 574 / 462 Gr.: UNS 2200 (NICKEL 200), UNS 2201 (NICKEL 201), UNS 4400 (MONEL 400), UNS 8020 (ALLOY 20 / 20 CB 3), UNS 8825 INCONEL (825), UNS 6600 (INCONEL 600), UNS 6601 (INCONEL 601), UNS 6625 (INCONEL 625), UNS 10276 (HASTELLOY C 276)	

Forms

Foils, Shim Sheet, Rolls, Perforated Sheet, Chequered Plate

Length

2B, 2D, Satin (Met with Plastic Coated), Hot rolled plate (HR), Cold rolled sheet (CR)

Value Added Services

Profile Cutting, Bending, Forging, Rolling, Heat Treatment, and Minor Fabrication

PRODUCT	STANDARDS & GRADES	SIZE RANGE
Alloy Steel Outlets	ASTM A182 Gr.: F1/F5/F9/F11/F22/F91	¼" NB to 24"NB LBS : 3000, 6000, 9000
Nickel Alloy Outlets	ASTM / ASME SB 564 / 160 / 472 Gr.: UNS 2200 (NICKEL 200), UNS 2201 (NICKEL 201), UNS 4400 (MONEL 400), UNS 8020 (ALLOY 20 / 20 CB 3), UNS 8825 INCONEL (825), UNS 6600 (INCONEL 600), UNS 6601 (INCONEL 601), UNS 6625 (INCONEL 625), UNS 10276 (HASTELLOY C 276)	¼" NB to 24"NB LBS : 3000, 6000, 9000
Alloy Steel Butt Weld Fittings	ASTM / ASME A/SA 234 Gr.: WP 1, WP 5, WP 9, WP 11, WP 12, WP 22, WP 23, WP 91.	15 NB To 100 NB
Nickel Alloy Butt Weld Fittings	ASTM / ASME SB 336. Gr.: UNS 2200 (NICKEL 200), UNS 2201 (NICKEL 201), UNS 4400 (MONEL 400), UNS 8020 (ALLOY 20 / 20) CB 3, UNS 8825 INCONEL (825), UNS 6600 (INCONEL 600), UNS 6601 (INCONEL 601), UNS 6625 (INCONEL 625), UNS 10276 (HASTELLOY C 276)	15 NB To 100 NB
Alloy Steel Flanges	ASTM / ASME A/SA 182 / A 387 Gr.: F5, F9, F11, F12, F22, F91.	15 NB To 500 NB/750 NB
Nickel Alloy Flanges	ASTM / ASME SB 564 / 160 / 472 Gr.: UNS 2200 (NICKEL 200), UNS 4400 (MONEL 400), UNS 8825 INCONEL (825), UNS 6600 (INCONEL 600), UNS 6601 (INCONEL 601), UNS 6625 (INCONEL 625), UNS 10276 (HASTELLOY C 276), UNS 2201 (NICKEL 201), (ALLOY 20 / 20 CB 3)	15 NB To 500 NB/750 NB
Nickel Alloy Fasteners	ASTM / ASME SB 160 / 164 / 425 / 166 / 446 / 574 / 472 Gr.: UNS 2200 (NICKEL 200), UNS 2201 (NICKEL 201), UNS 4400 (MONEL 400), UNS 8825 (INCONEL 825), UNS 6600 (INCONEL 600), UNS 6601 (INCONEL 601), UNS 6625 (INCONEL 625), UNS 10276 (HASTELLOY C 276), UNS 8020 (ALLOY 20 / 20 CB 3)	M10 to M100, LENGTH: Up to 5 Mtr
Alloy Steel Fasteners	ASTM / ASME A/SA 193 / 194 Gr.: B 6, B 7/ B 7M, B 16, 2, 2HM, 2H, GR 6, B 7, B 7M	M10 to M100, LENGTH: Up to 5 Mtr

Value Added Services

Hot Dipped Galvanizing, Phosphate, Teflon, Xylem, Zinc, Cadmium Coating



C3600 Brass Threaded Rod



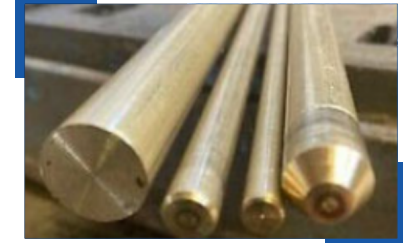
Brass 360 Bars



Brass Round Bar



2.5m Length Solid Brass Bar



ASTM B16 C36000 Brass Rod



C2600 Brass Round Bar



C38000 C36000 Brass Flat Bar



Dia 2-90mm C2600 Brass Round Square Bar



C34500 CuZn36PB1.5 CZ119Lead Brass Round Bar



50mm Brass Rod



Small Diameter C2600 10mm Diameter Brass Round Bar



C3602 Brass Rod 2.0-40.0mm*2500mm



Alloy C67420 6.0-110.0mm Brass Round Bar



2mm 3mm 5mm Brass Round Hex Bar Rod



1mm 3mm 5mm 10mm 50mm C28000 C26800 Hollow Brass Rod

Standard	ASTM B16/ ASME SB16, ASTM B62/ ASME SB62
Surface	Supplier in Cold Drawn, Bright, Hairline, Polished, Hot Rolled Pickled, Sand Blasting Finished
Dimensions	AISI EN BS ASME ASTM JIS DIN
Sizes of Flat Bar	Width: 10 - 500 mm Diam.: 2 ~ 100 milimetre
Size of Billet	1/2 inch - 495 mm Diameter
Round Bar Size	Thk.: 3 to 800 milimetre
Hollow Bar Size	32 millimeter O.D. x 16 mm I.D. to 250 millimeter O.D. x 200 mm I.D.
Section Bar	3.0 - 12.0 millimeter thk
Angle Bar Sizing	3 mm * 20 mm * 20 mm ~ 12 milimetre * 100 milimetre * 100 milimetre
Delivery Condition	Hardened, Tempered, Annealed
Size of Channel Bar	5 - 6 millimeter thk., 80 x 40 millimeter - 150 x 75 milimetre
Tolerance	H9, K11, H8, H12, H11, H13, K10, H10, K12, K9 or as per demand
Form	Round Rod, Billet, Round, Rectangle, Rod, Forging, Hex (A/F), Rings, Channel Bar, Half Round Bar, Square, I/H Bar, Ingot, Precision Ground Bar, Flat Bar, Triangle, Blocks, T Bar, Profiles, Threaded, Hollow etc.

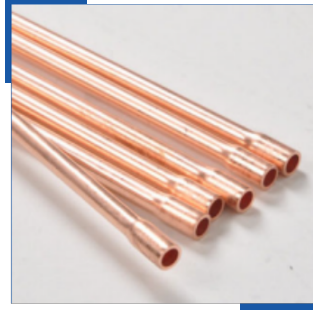
CG	Centreless ground	HF	Hot finished
CF	Cold finished	HRAP	Hot rolled annealed and pickled
CD	Cold drawn	P	Polished
BD	Bright drawn	SRE	Slit rolled edge
P&T	Peeled and turned	RT	Rough turned/peeled
ST	Smooth turned	PR	Peeled and reele

Brass C26000 H02 Forged Bar Equivalent Grades

- UNS C36000
- SAE J461
- ASTM B16
- SAE J463



Copper square pipe



Copper capillary pipe



150mm diameter seamless copper pipe



Thin wall copper pipe



Copper rectangular pipe



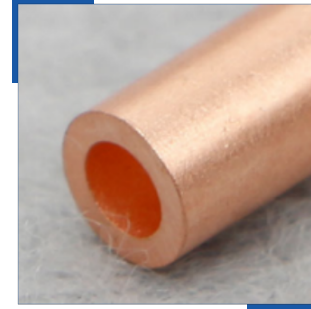
Copper EFW Pipe



Copper Welded Pipe



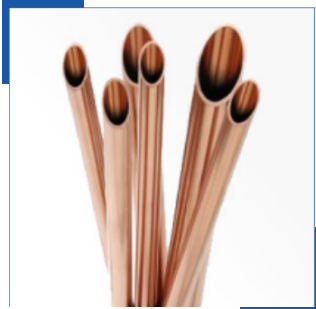
Pancake Coil Copper Pipe



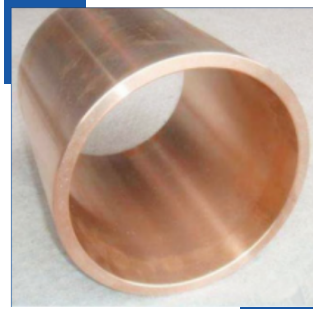
Copper Pipe



Copper Seamless Pipe



15mm copper pipe



AC Copper Pipe



Copper ERW Pipe



Straight Copper Pipe



ASTM B16 C36000 Brass Rod

Specification	ASTM B280 ASME SB280 / ASTM B68 ASME SB68
Material	T1, T2, C10100, C10200, C10300, C10400, C10500, C10700, C10800, C10910, C10920, TP1, TP2, C10930, C11000, C11300, C11400, C11500, C11600, C12000, C12200, C12300, TU1, TU2, C12500, C14200, C14420, C14500, C14510, C14520, C14530, C17200, C19200, C21000, C23000, C26000, C27000, C27400, C28000, C33000, C33200, C37000, C44300, C44400, C44500, C60800, C63020, C65500, C68700, C70400, C70600, C70620, C71000, C71500, C71520, C71640, C72200, etc.
Seamless Pipe size	4 to 219mm W. T.: 0.5 to 20mm
Welded Pipe size	5.0 mm – 1219.2 mm
EFW Pipe size	5.0 mm – 1219.2 mm
Schedule	SCH5, SCH10, SCH10S, SCH20, SCH30, SCH40, SCH40S, STD, SCH80, XS, SCH60, SCH80, SCH120, SCH140, SCH160, XXS
Form	Round, Square, Hollow, Rectangular, Hydraulic, Straight Pipes Etc.
Sizes	<p>Copper Round Pipe Wall thickness: 0.2mm~120mm Outside Diameter: 2mm~910mm</p> <p>Copper Square Pipe Wall thickness: 0.2mm~120mm Size: 2mm*2mm~1016mm*1016mm</p> <p>Copper Rectangular Pipe Wall thickness: 0.2mm~910mm Size: 2mm*4mm~1016mm*1219mm</p>
Hardness	1/16 hard, 1/8 hard, 3/8 hard, 1/4 hard, 1/2hard, full hard, soft etc
Pipe End	Plain End, Beveled End, Treaded.
Length	Single Random, Double Random & Cut Length.

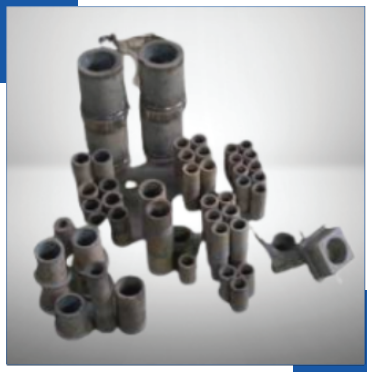
(mm)	Outside Diameter (mm)	Table X Half hard light gauge tube		Table Y Half hard an annealed tube		Table Z Hard drawn thin wall tube	
		Thickness (mm)	Maximum Working Pressure (N/mm ²)	Thickness (mm)	Maximum Working Pressure (N/mm ²)	Thickness (mm)	Maximum Working Pressure (N/mm ²)
6	6	0.6	13.3	0.8	14.4	0.5	11.3
8	8	0.6	9.7	0.8	10.5	0.5	9.8
10	10	0.6	7.7	0.8	8.2	0.5	7.8
12	12	0.6	6.3	0.8	6.7	0.5	6.4
15	15	0.7	5.8	1	6.7	0.5	5
18	18	0.8	5.6	1	5.5	0.6	5
22	22	0.9	5.1	1.2	5.7	0.6	4.1
28	28	0.9	4	1.2	4.2	0.6	3.2
35	35	1.2	4.2	1.5	4.2	0.7	3
42	42	1.2	3.5	1.5	3.4	0.8	2.8
54	54	1.2	2.7	2	3.6	0.9	2.5
67	67	1.2	2	2	2.8	1	2
76.1	76.2	1.5	2.4	2	2.5	1.2	1.9
108	108.1	1.5	1.7	2.5	2.2	1.2	1.7
133	133.4	1.5	1.4			1.5	1.6
159	159.4	2	1.5			1.5	1.5

Standard	ASTM B68 / ASTM B75 / ASTM B280 / ASTM B88 / JIS H 3300 / EN1057 or BS2871: PART 2:1972 / DIN 1754/8905/ IS2501
Specification	ASTM B280, JIS H3300, AS/NZS1571.JIS3300-2006
Material	TU2, C1020T, C10200, T2, C1100, TP1, C1201T, C1200, TP2, C1220T, C12200, C14200, C19400, etc
Outer Diameter(OD)	4mm-150mm
Wall Thickness	0.25mm-8mm
Length	1 meter-6 meter or as required
Cut Length	Single Random, Double Random & Cut Length
Types	Seamless Pipes, Tube / Inner Grooved Pipes / Square Pipes, Tube / Rectangular Pipes, Tube / Finned Pipes, Tube
Application	<ol style="list-style-type: none"> 1. Pancake Coil for ACR, General Engineering Applications 2. LWC Coil for ACR, General Engineering Applications 3. Straight Copper Tubes for ACR and Refrigeration 4. Inner-grooved copper tube for ACR and Refrigeration 5. Copper Pipe for Transportation System of water, gas and oil 6. Semi-finished Copper tube for industrial applications

Pipe / Tube Type	Nominal Pipe Size	O.D	I.D.				Wall Thickness			
			K	L	M	DWV	K	L	M	DWV
copper tubes to bs (british standard) 2871	1/4"	3/8"	0.305	0.315	-	-	0.035	0.030	-	-
copper tubes to bs (british standard) 2871	3/8"	1/2"	0.402	0.430	0.450	-	0.049	0.035	0.025	-
copper tubes to bs (british standard) 2871	1/2"	5/8"	0.527	0.545	0.569	-	0.049	0.040	0.028	-
copper tubes to bs (british standard) 2871	5/8"	3/4"	0.652	0.666	-	-	0.049	0.042	-	-
copper tubes to bs (british standard) 2871	3/4"	7/8"	0.745	0.785	0.811	-	0.065	0.045	0.032	-
copper tubes to bs (british standard) 2871	1"	1-1/8"	0.995	1.025	1.055	-	0.065	0.050	0.035	-
copper tubes to bs (british standard) 2871	1-1/4"	1-3/8"	1.245	1.265	1.291	1.295	0.065	0.055	0.042	0.040
copper tubes to bs (british standard) 2871	1-1/2"	1-5/8"	1.481	1.505	1.527	1.541	0.072	0.060	0.049	0.042
copper tubes to bs (british standard) 2871	2"	2-1/8"	1.959	1.985	2.009	2.041	0.083	0.070	0.058	0.042
copper tubes to bs (british standard) 2871	2-1/2"	2-5/8"	2.435	2.465	2.495	-	0.095	0.080	0.065	-
copper tubes to bs (british standard) 2871	3"	3-1/8"	2.907	2.945	2.981	3.030	0.109	0.090	0.072	0.045

Grade	CW024A-H040 / C106, 102, 110
ASTM Specification	ASTM B152 UNS C12200, ASME SB152, MSRR, AMS, BS
Specification	MSRR, AMS, BS, ASTM B152 / ASME SB152
ASTM Standard Designations for C10200 OFHC Copper plate & sheet	ASTM B152 C10100 meets ASTM F68 specification.
Length & Sizes	1000 mm x 2000 mm, 1000 mm x 2000 mm, 1220 mm x 2440 mm, 1500 mm x 3000 mm, 2000 mm x 2000 mm, 2000 mm x 4000 mm, 1220 mm x 2440 mm, 1500 mm x 3000 mm, 2m, 2.44m, 3m, 36" X 120" or 48" X 144", Cut to size available
Thickness	0.1mm to 100 mm Thk
Sheet Width	36" widths - .032", .0625", .125"
Plate Width	10-2500mm
AMS	AMS
Hardness	Soft, Hard, Half Hard, Quarter Hard, Spring Hard etc.
Temper	Annealed, 1/4-Hard, 1/2-Hard, 3/4-Hard, Full Hard, Hard as Rolled, Spring
Condition	Polished on both sides
Finish	Bare/Standard, Hot Tin Dipped, Tin Plated, Hot rolled plate (HR), Cold rolled sheet (CR), 2B, 2D, BA NO(8), SATIN (Met with Plastic Coated)
Stock in form of	C101 Copper Plate, Sheet, Coils, Foils, Rolls, Plain Sheet, Shim Sheet, Strip, Flats, Clad Plate, Rolling Sheet, Flat Sheet, Rolling Plate, Flat Shim, Blank (Circle), hot rolled, cold rolled, annealed, soft annealed, descaled, sheared, tread plate, Checker Plate
Gauges	.0005" to .010" .0005", .0007", .001", .0014", .002", .003", .004", .005", .006", .008", .010"

Copper Bar Grades	C14500 Tellurium Copper Alloy, C145 Tellurium Copper Rod and Bar, Alloy 101 Copper Round Rod, Alloy 110 Copper Round Rod, Alloy 122 Copper Round Rod, Alloy 145 Copper Round Rod (C10100, C11000, C12200, C14500)
Specification	ASTM F68, ASTM B301, ASTM B187
Copper Round bar size	Diameter: 3mm~800mm
Copper Angle bar size	3mm*20mm*20mm~12mm*100mm*100mm
Copper Square bar size	4mm*4mm~100mm*100mm
Copper Flat bar size	Thickness: 2mm~100mm Width: 10mm~500mm
Copper Hex Bar size	2mm~100mm
Copper Billet Size	1/2" to 495mm Diameter
Finish	Bright, Polish, Bright, Rough Turned, Grinding, Centreless Ground & Black
Tolerance	H8, H9, H10, H11, H12, H13K9, K10, K11, K12 or as per clients' requirements
Surface	Hot Rolled Pickled or Sand Blasting Finished, Cold Drawn, Bright, Polished, Hairline
Condition	Cold Drawnd Pulished Cold Drawn Centreless Ground & Polished, Annealed round bar
Technique	Copper Hot Rolled, Cold Rolled, Cold Drawn, Forged Round Bar, Rod
Copper Bar Type	Drawn Bar, Rolled Bar, Forged Bar, GFM Forged Bar, Open Die Bar, Forged Stepped Shafts, Forged Flat Bar, Forged Square Bar
Also Check price list of	Inconel Round Bar, Inconel 625 Round Bar, Inconel 718 Round Bar, Hastelloy Round Bar, Monel Round Bar, Titanium Round Bar, Copper Nickel Bar, Stainless Steel Round Bar
Form	Round, Rod, Precision Ground Bar, Square, Round Rod, Hollow, Hex (A/F), Triangle, Rectangle, Threaded, T-Bar, Half Round Bar, Flat Bar, Rings, Blocks, Billet, Ingot, I/H Bar, Angle, Channel Bar, Profiles, Forging Etc.



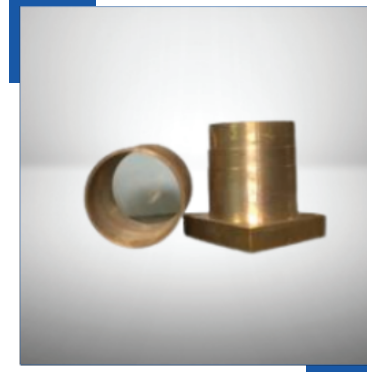
Gun Metal Casting



Bronze Casting



Gun Metal Bush



Bronze Bush



Sugar Mill Liner



Graphite Filled
Bronze Bush



Industrial Gun
Metal Bush



Bronze Bearing



P.P. SIZER



Worm Gear



Bronze Valve



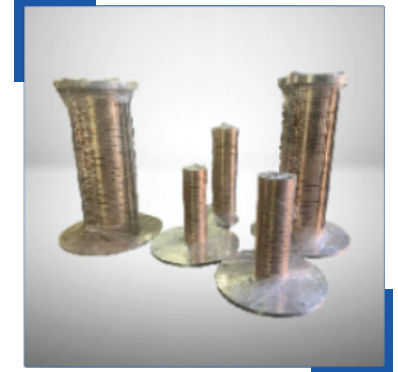
Cement Plant Gun Metal Bearing



Bronze Tierod Bush



Gun Metal Bars



Gunmetal Parts



Bronze Cone Crusher Bushing



Rolling Mills Gun Metal Bush



Connecting Rod Bronze Bush



Marin Bronze Bearing



Forging Press Bush

COPPER ALLOYS	STANDARD	CU	SN	PB	ZN	FE	NI
C83600	ASTM	84-86	4.3-6	4-5.7	4.3-6	0.25	1
RG-5	DIN	84-86	4-6	4-6	4-6	0.2	2
CB491K	EN	83-86.5	4.2-6	4.2-5.8	4.5-6.5	0.25	2
CAC406 (BC6)	JIS	Rem.	4-6	4-6	4-6	0.5	2
LG-2	BS:1400	84-86	4-6	4-6	4-6	0.5	2
LTB-2	IS:318-1981	Rem.	4-6	4-6	4-6	0.35	2
G-CuSn5Zn5Pb5	UNI7013	Rem.	4-6	4-6	4-6	0.3	2



We have already delivered our consignment to more than 50 countries.

Thank you. For your valuable time!

Contact Us

and let one of our friendly staff help with your requirements.

✉ export@onetouchexim.com

🖱 www.onetouchexim.com

📞 +91 9315412619

📍 Plot No. E-21C, Sector-8,
Noida, UP-201301, India