

STAINLESS STEEL



10+ years of the experience in
ferrous & non-ferrous metals

www.onetouchexim.com

EXPORTER OF
FERROUS & NON-FERROUS METALS

With an outstanding range of steel products, One Touch Exim Engage in manufacturing and supplying high-quality SS metal products with a robust mix of experience over the decades. Our product range includes various types of steel tubes, tubing & pipes, stainless steel shim, welded pipes, steel pipe fittings, and more.

We have a strict quality control approach to ensure that every product we manufacture and supply must meet industry standards and customer expectations.

We make a global presence with our quality products, commitment & on-time delivery. Our dedicated team of procurement and logistics works 24/7 to support the Marketing team. As a result of buying & selling non-ferrous metal for many years, OneTouchexim has established itself as an outstanding worldwide procurement network, trader & distributor. We manage a huge inventory of metals starting from Stainless Steel, Alloy Steel, Brass & Bronze from the raw material to the finished product.

We offer a platform where small customers can buy a wide range of products with MOQ & we consolidate for them. Our client looking at us as a one-stop solution for all categories of metals. OneTouchexim helps beyond the range on special occasions to find the best match of product. We aim to provide the right product at the right price & the right time.



Our Mission

To manufacture and supply high-quality steel products and services that meet the needs of the customers with minimal environmental impact. Building trust and long-term relationships for achieving goals effectively. We also believe that our success is tied to the success of our employees, stakeholders, & communities.



Our Vision

Expanding global presence through strategic partnerships and acquisitions to better serve customers and create sustainable growth. We believe that through dedication, hard work, and cooperation we will be able to create a bright future for everyone.

Accountability

We have our trusted supply chain to promise delivery on time. We accept our individual and team responsibilities to meet our commitments & take responsibility for our performance in all of our decisions and actions. We take care of accountability for our precious clients doesn't matter when they start working with us.

Cooperation

Good mutual cooperation across positions and departments is the basis for a pleasant working atmosphere in which employees feel good about themselves and what they are doing. The outmoded oppositions between production and maintenance, factory and administration, and production and sales no longer have any places.

Innovation

We are creative in delivering value to our fellow associates, customers, shareowners, manufacturers, and the community. We anticipate change and capitalize on the many opportunities that arise. Innovation is a continual process that requires ongoing monitoring, testing, and leadership to minimize risks and optimize outcomes.

Positive Change

Embracing and capitalizing on change, recognizing that every employee must be empowered to stimulate continuous improvement in all aspects of our business. Positive change encourages innovation, develops skills, develops staff and leads to better business opportunities, and improves staff morale.

Professionalism

We strive to fulfill our responsibilities to the highest possible standards throughout. Employers want new workers to be responsible, ethical, and team-oriented, and to possess strong communication, interpersonal, and problem-solving skills. Wrap these skills up all together and you've got professionalism.

10+ years of experience

Leadership

We encourage leadership among employees to develop and maintain a talent pool. Life, Health, and Environment. We seek to improve our well-being, our working conditions, and the surroundings in which we live. This is different from traditional leadership where the leader's main focus is the thriving of their company or organization.

Teamwork

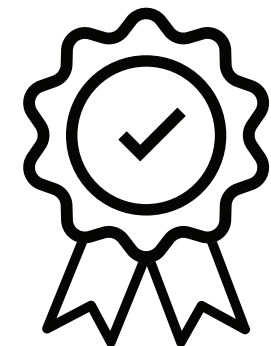
A modern company must be based on teamwork and mutual trust, on striving together for continuous improvement. Our team is supportive of each other's efforts, loyal to one another, and cares for each other both personally and professionally. We work together toward a collective goal in an efficient manner.

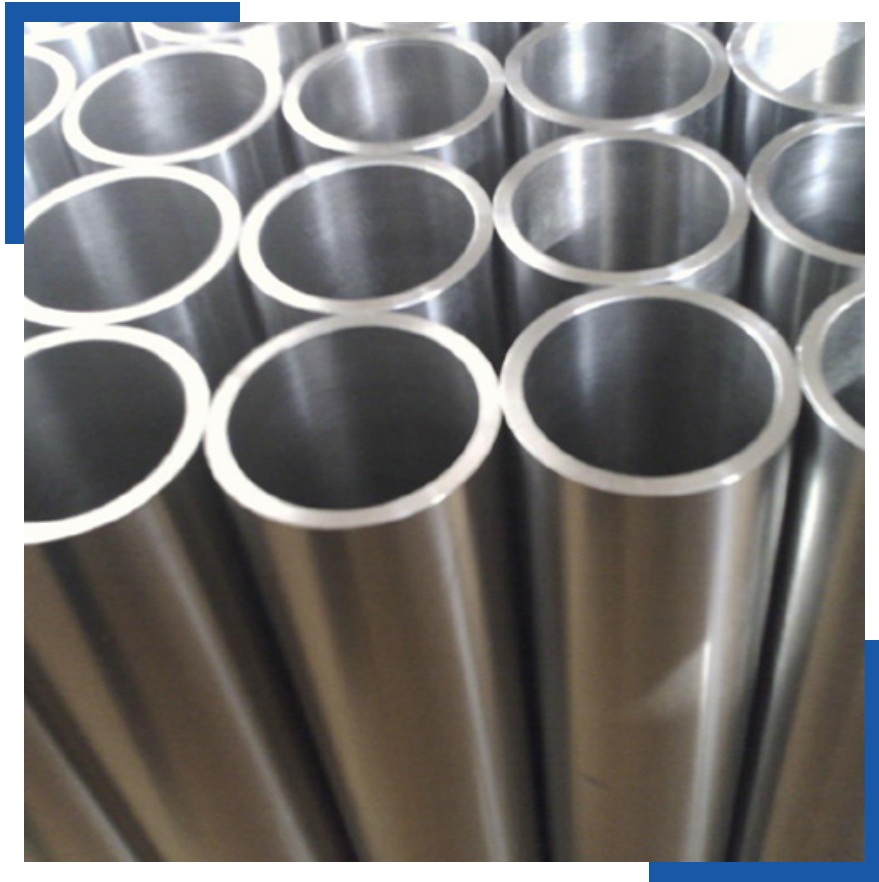
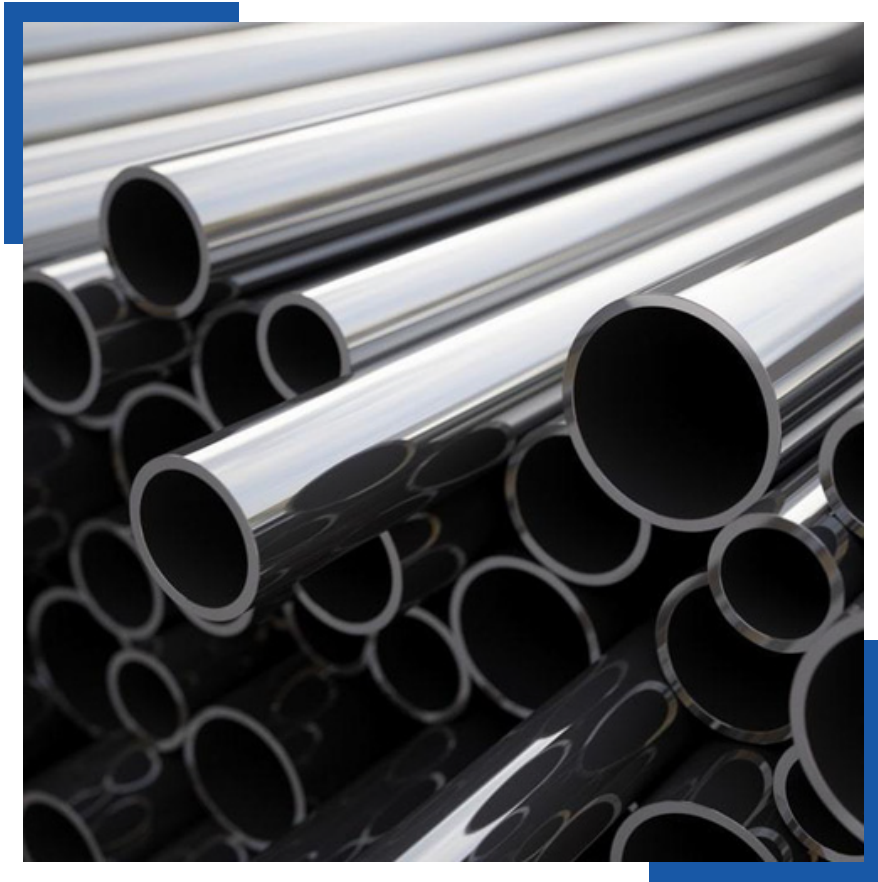
Empowerment

To empower our talented people to take the initiative and to do what's right. Customer service empowerment involves encouraging and authorizing customer service representatives to make decisions that can ultimately benefit both the customer and the company with the help of employee experience.

Open communication

All team members are encouraged to openly share their opinions and views. Open communication between senior managers & other workers helps to express their ideas, issues & thoughts with one another in a steady, honest, transparent, and reliable manner. This way, teams can avoid surprises, resolve conflicts, and collaborate better.





PRODUCT	TYPE	STANDARDS	GRADES	SIZE RANGE
Pipes	Seamless	ASTM A-312, A-213, A-269, A-268, SA 358, CL1, CL3	TP- 202,304, 304H, 304L, 309, 310, 310S, 316, 316H, 316L, 316Ti, 317, 317L, 321, 321H, 347, 347H, 409, 410, 420, 430, 904L	1/4" NB to 24" NB SCH : 5,10,20,40,80,160, XXSL
	Welded (ERW,EFW,SAW)	ASTM A-312, A-778, A-249, A-269, A-270, A-668, A-249, A 249, A-554, A-358,IS 13316	TP- 202,304, 304H, 304L, 309, 310, 310S, 316, 316H, 316L, 316Ti, 317, 317L, 321, 321H, 347, 347H, 409, 410, 420, 430, 904L	1/2" NB to 60" NB SCH: 5, 10,20,40,80,160, XXS.
Tubes	Seamless, Welded (ERW,EFW,SAW)	ASTM A-269, A-213,A-249	TP- 304, 304L, 304H, 309S, 309H, 310S, 310H, 316, 316TI, 316H, 316L, 316LN, 317, 317L, 321, 321H, 347, 347H, 904L	6.35 mm OD to 254 mm OD THICKNESS: 0.6 mm TO 20 mm
Duplex & Super Duplex Pipes	Seamless, Welded	SA 790	UNS NO S 31803 , S 32205	1/4" NB to 16" NB SCH : 5,10,20,40,80,160, XXS

Forms

Round, Square, Rectangular, Oval,

Length

Single, Double Random, Cut Length

Ends

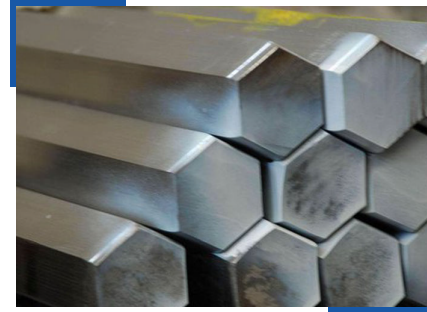
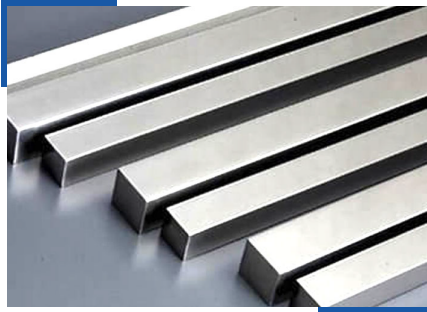
Plain End, Beveled End, Threaded

Coating on pipe

- Epoxy Fusion Bonded Epoxy Coating,
- Three Layer Polyethylene Coating,
- Three Layer Polypropylene Coating,
- Coal tar Enamel Coating,
- Cement Mortar Lining Coating,
- Concrete Weight Coating

Value Added Services

Hot Dipped Galvanizing, Electro Polish, Drawing & Expansion, Bending, Buffing



PRODUCT	TYPE	STANDARDS	GRADES	SIZE RANGE
Bars & Rods	Black and Bright	ASTM A-276, A-314, A-582, A-479, A-A484	304, 304H, 304L, 309, 310, 310S, 316, 316L, 316Ti, 317, 317L, 321, 321H, 347, 347H, 904L, UNS31803	1DIA: 3mm to 300mm

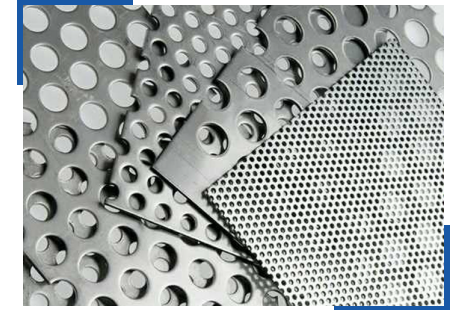
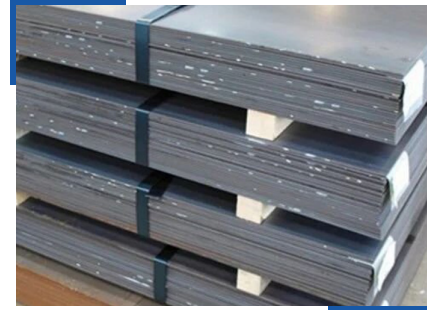
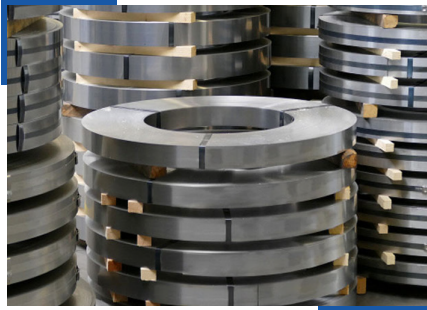
Forms

Round Bars, Square Bars, Hexagons, Rectangles, Triangles, I-Bars.

Value Added Services

Hot Dipped Galvanizing, Epoxy & FBE Coating, Electro Polish

Also available **SS ANGLES** of various Standard, Sizes and specifications.



PRODUCT	TYPE	STANDARDS	GRADES	SIZE RANGE
Plates, Sheets, Coils	Sheet, Plates, Coils, Flat, Strips, Profile, Blank, Circle, Ring, Washers	ASTM A240, ASTM B625	304, 304H, 304L, 309, 310, 310S, 316, 316L, 316Ti, 317, 317L, 321, 321H, 347, 347H, 904L, UNS31803	1DIA: 3mm to 300mm

Forms

Round Bars, Square Bars, Hexagons, Rectangles, Triangles, I-Bars.

Value Added Services

Hot Dipped Galvanizing, Epoxy & FBE Coating, Electro Polish

Also available **SS ANGLES** of various Standard, Sizes and specifications.



PRODUCT	TYPE	STANDARDS	GRADES	SIZE RANGE
Butt-weld Fittings	Seamless, Welded, Fabricated	ASTM A403, ANSI B 16.9 ASTM A182, ANSI B 16.11	TP- 202,304, 304H, 304L, 309, 310, 310S, 316, 316H, 316L, 316Ti, 317, 317L, 321, 321H, 347, 347H, 409, 410, 420, 430, 904L	1/8" NB To 48"NB SCH: 5s, 10s, 40s, 80s, 10, 20, 40, STD, 60, 80, XS, 100, 120, 140, 160, XXS
Duplex Steel Butt-weld Fittings	Seamless, Welded, Fabricated	ASTM, ASME, SA 182	UNS NO.S 31803, S 32205	-
Forged Fittings	Socket Welded & Screwed	ASTM, ASME, SA 182	F 304, 304L, 304H, 309S, 309H, 310S, 310H, 316, 316TI, 316H, 316L, 316LN, 317, 317L, 321, 321H, 347, 347H, 904L	15" NB to 100" NB LBS : 3000, 6000, 9000
Outlets	Socket Welded & Screwed	ASTM, ASME, SA 182	F 304, 304L, 304H, 309S, 309H, 310S, 310H, 316, 316TI, 316H, 316L, 316LN, 317, 317L, 321, 321H, 347, 347H, 904L	¼" NB to 24"NB LBS : 3000, 6000, 9000
Flanges	-	ASTM, ASME, SA 182, A-240	F 304, 304L, 304H, 309S, 309H, 310S, 310H, 316, 316TI, 316H, 316L, 316LN, 317, 317L, 321, 321H, 347, 347H, 904L	½" (15 NB) to 48" (1200NB) LBS : 150,300, 600, 900, 1500, 2500, ASA : 150, 300 PN : 6,10,16,25, 40,64,100,160
Fasteners	-	ASTM,ASME A,SA 193/194 UNS NO.S 31803, S 32205 (Duplex Fasteners)	B 8 (304),B 8C(SS 347),B 8M(SS 316),B 8 T (SS 321), A 2, A 4	M10 to M100, LENGTH: Up to 5 Mtr

Forged Fittings Forms

Elbow 45 deg & 90 degree, Tee, Union, Full & Half coupling, Cross, Cap, Swage Nipple, Plug- Bush

Outlets Forms

Weldolet, Sockolet, Elbowlet, Thredolet, Nipolet, Letrolet, Swepolet

Flanges Forms

Slip on – SORF, Weld Neck – WNRF, Socket Weld – SWRF, Blind – BLRF, Lapped Joint, Screwed, Long Weld Neck, Reducing, Spectacle, Ring Joint, Drawing

Butt-weld Fittings Forms

- Elbows in Long & Short Radius in 45 deg, 90 deg, 180 deg,
- Equal, Unequal Tee & Barred Tee,
- Eccentric Reducer & Concentric Reducer.
- Caps & Crosses.
- Long & Short Stub End.
- Swage Nipple & Barrel Nipple.

Fasteners Forms

Bolts : Stud Bolts, Hex Head Bolts, Socket Hexagon Head Screw Anchor Bolts, U-Bolts, J Bolts, Mushroom Head Square Neck Bolts, T- head Bolts, Wing Screw, Eye Bolt, Eye Bolt, Foundation Bolts, and Structural Bolts.

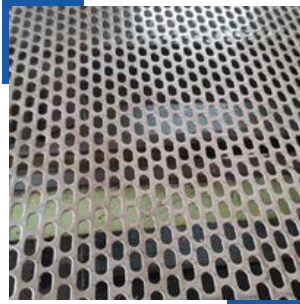
Washer : Plain Washer, Plain Big & Small OD Washer, Spring Lock Washer, Spring Washer Heavy Duty, Tooth Washer, Star Washer,

Nuts : Hexagon Nuts , Hexagon Coupling Nuts , Hexagon Thin Nut , Square Nut , Hexagon Castle Nuts , Self Locking Nut , Hexagon Domed Cap Nuts.

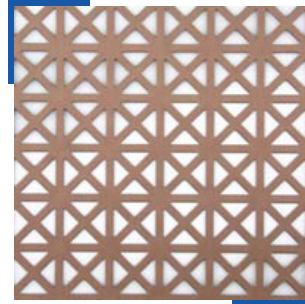
Screw : Pan Head Slotted Screws , Cheese Head Slotted Screws , Countersunk Head Slotted Screws , Countersunk Raised Head Slotted Screws , Pan Phillipse Head Screw , Countersunk Phillipse Raised Head Screws , Slotted Cheese Trim Head Machine Screws , Socket Head Allen Cap Screws , Allen Countersunk Socket Head Cap Screws , Socket Head Shoulder Screws , Socket Head Cap Screw Low Head , Hexagon Socket Set Screw With Flat Point , Hexagon Socket Set Scews With Cone Point , Hexagon Socket Set Screw With Dog Point , Hexagon Socket Set Screws With Dog Point , Hexagon Socket Set Screws With Cup Point, Imprial Socket Cap Screws.

Value Added Services

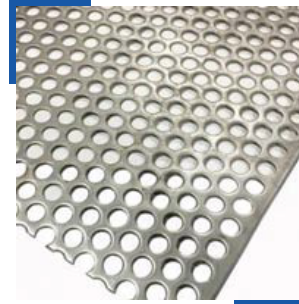
Hot Dipped Galvanizing, Epoxy & FBE Coating, Electro Polish, Heat Treatment, CNC Machining, Threading



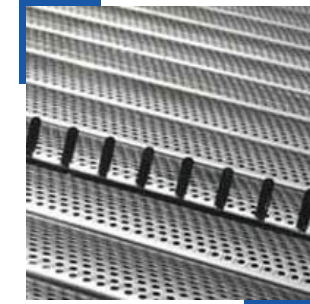
Slot Hole
Perforated Sheet



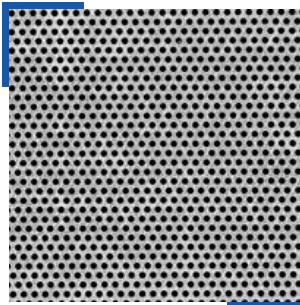
Decorative
Perforated Sheet



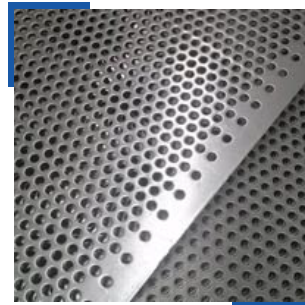
316 Stainless Steel
Perforated Sheet



Decorative
Perforated Sheet



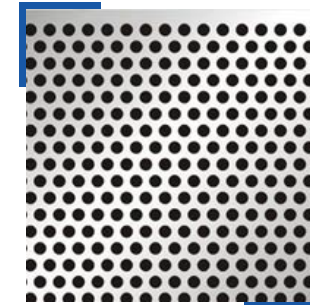
SS 304
Perforated Sheet



Stainless steel
perforated mesh sheet



SS Perforated
Sheet



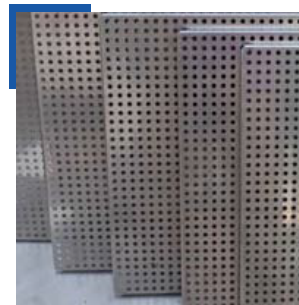
Perforated
SS Sheet



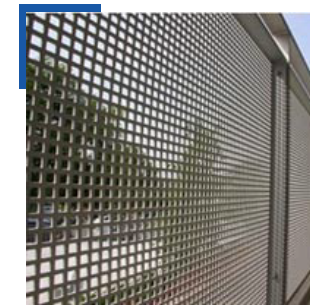
Perforated
Steel Sheet



Slotted Stainless Steel
Perforated Sheet



Stainless Steel
Perforated Sheet



Square Hole
Perforated Sheet

Type	1mm/ 2mm perforated stainless steel metal mesh screen sheet	
Thickness	0.3-15mm	
Widthness	1000mm~ 2000mm or customized	
Length	1000mm~ 6000mm or customized	
High Demand SS Perforated Sheet Thickness	1, 1.25, 1.6, 2, 8 mm	
Standard	JIS, AISI, ASTM, GB, DIN, EN	
Material	201/201/304/ 304L/ 316/316ti/ 316L/ 321/309S/ 310S/ 904L stainless steel perforated sheet	
Surface	2B, BA, HL, Brush, NO.1, NO.4, 8K, SB, etc	
Hole Pattern	<ul style="list-style-type: none"> - Round Hole Perforated Sheet - Square Hole Perforated Sheet - Slot Hole Perforated Sheet 	<ul style="list-style-type: none"> - Decorative Perforated Sheet - Embossed Sheet
Other Perforation Material	<ul style="list-style-type: none"> - Perforated Steel Sheet - Perforated Stainless Steel Sheet 	<ul style="list-style-type: none"> - Perforated Aluminum Sheet - Perforated Copper Sheet
Perforated Sheet Application	<ul style="list-style-type: none"> - Etched Plates - Perforated Metal Noise Barrier - Perforated Filter - Perforated Tube 	<ul style="list-style-type: none"> - Perforated Sunshade Panels - Perforated Kinetic Facade - Anti-Skid Stair Steps
Certificate	We accept the third inspections such as SGS-BV etc.	
Standard sheet sizes	1000mm*2000mm, 1250mm*2500mm, 1219mm*2438mm, 1500mm*3000mm We can produce other standard as customized	

Surface Finish	Thickness (mm)
No. 1	3.0mm ~50.0mm
2B	0.25mm ~6mm
No. BA (Bright Annealed)	0.25mm ~3.0mm
No. 4	0.4mm ~3.0mm
No. 8	0.5mm ~2.0mm
HL(Hair Line)	0.4mm ~3.0mm

Hole Diameter		Staggered Centers	Sheet Thickness		Open Area
0.033 In.	0.84mm	0.055«	0.0165-0.0198 IN.	0.40-0.50mm	28.00%
0.045 In.	1.14mm	0.066«	0.0165-0.0198 IN.	0.40-0.50mm	37.00%
1/16 In.	1.59mm	3/32 In.	0.026-0.053 IN.	0.66-1.35mm	41.00%
1/16 In.	1.59mm	1/8 In.	0.046-0.053 IN.	1.17-1.36mm	23.00%
3/32 In.	2.38mm	9/64 In.	0.054-0.065 IN.	1.37-1.65mm	40.30%
3/32 In.	2.38mm	5/32 In.	0.026-0.079 IN.	0.66-2.00mm	33.00%
3/32 In.	2.38mm	1/4 In.	0.033-0.053"	0.84-1.35mm	12.50%
1/8 In.	3.17mm	3/16 In.	0.026-0.129"	0.80-2.89mm	40.00%
1/8 In.	3.17mm	7/32 In.	0.026-0.039"	0.66-0.99mm	29.60%
5/32 In.	3.97mm	3/16 IN.	0.026-0.065"	0.66-1.65mm	63.00%
3/16 In.	4.76mm	1/4 IN.	0.026-0.079"	0.66-2.00mm	50.00%
3/16 In.	4.76mm	5/16 IN.	0.029", 0.059"	0.73mm, 1.50mm	32.00%
1/4 In.	6.35mm	5/16 IN.	0.026-0.079"	0.66-2.00mm	58.00%
1/4 In.	6.35mm	3/8 IN.	0.012", 0.026-0.065"	0.30mm, 0.66-1.65mm	40.00%
1/2 In.	12.70mm	11/16 IN.	0.059", 0.121"	1.50mm, 3.00mm;	48.00%



We have already delivered our consignment to more than 50 countries.

Thank you. For your valuable time!

Contact Us

and let one of our friendly staff help with your requirements.

✉ export@onetouchexim.com

🖱 www.onetouchexim.com

📞 +91 9315412619

📍 Plot No. E-21C, Sector-8,
Noida, UP-201301, India